



# TECHNICAL SPECIFICATIONS



THE EBELL OF LOS ANGELES

# WILSHIRE EBELL THEATRE

## ADDRESS:

The Wilshire Ebell Theatre is located at the corner of West 8th Street and Lucerne Blvd. with easy access from the 10 and 101 freeways. Our mailing address is:

*743 S Lucerne Blvd.*

*Los Angeles, CA 90005*

**Director of Production:** Matthew Schroeder

**Theatre Business Manager:** Erika Newman

## CONTACT INFORMATION:

To talk with the Director of Production, please call the

**Director of Production's Office:** 323-934-3301

or e-mail at [matthew@wilshireebelltheatre.org](mailto:matthew@wilshireebelltheatre.org)

Production contact hours 9:00 am - 5:00 pm.

The following are listed for your convenience.

**E-mail:** [inquiry@wilshireebelltheatre.org](mailto:inquiry@wilshireebelltheatre.org)

**Web address:** [www.WilshireEbellTheatre.org](http://www.WilshireEbellTheatre.org)

## GENERAL INFORMATION:

The Wilshire Ebell Theatre is a 1,238-seat theatre built in 1927. It is owned and operated by The Ebell of Los Angeles, a private ladies' club. Below are listed a few basic guidelines for your information:

1. No smoking anywhere in the theatre building.
2. No food or drink (other than bottled water) is allowed in the house. Food may be eaten in the dressing rooms or in designated areas backstage.
3. No nailing, bolting or screwing of scenery to the stage floor. No nailing, taping, screwing, pinning or fastening of posters, signs, or scenery to any of the Ebell walls, hallways, or curtains.
4. Smoke or haze requires the presence of a L.A.F.D. Fire Marshal at the producers' expense. Any use of open flames or pyrotechnics is prohibited without prior approval by the Director of Production and the L.A.F.D. The L.A.F.D. determines whether or not the presence of a Fire Marshal and/or a licensed pyrotechnician is needed. This is also at the Producer's expense.
5. Fire Codes are strictly adhered to. All "soft goods" must have a certificate of flameproofing.
6. Audio and Video recording is restricted and subject to an "additional usage" fee. Please check with the Director of Production if you wish to record your show. Placement of cameras, sound, or lighting equipment is also restricted.
7. Security for the "house", backstage or parking lots is the responsibility of the producer. For assistance in locating security services contact the Theatre Business Manager.
8. Strike and Restore of the house is required immediately following the final contracted performance. All equipment and scenery must be out of the theatre by our midnight curfew. Load-outs which might go later are subject to a walk-away at midnight and a minimum 4 hour strike call the next morning. Equipment or scenery left at the theatre is at the producer's risk and may be subject to storage and or/cartage fees.
9. Parking is free in the two Ebell parking lots but is shared with the Ebell Club. Please note: there is no guarantee of access of both lots on day of performance
10. Expendables (such as tape, twine, wire, hardware, lighting gels) as well as power cords, power strips, and tools are the responsibility of the producer. Unless otherwise arranged with the Director of Production. Tools loaned out by the Ebell Theatre and not returned are subject to replacement costs.

*Please note that information listed in this Advance Sheet is subject to change at any time.*

## STAGE DIMENSIONS *and* SPECIFICATIONS

<b>PROSCENIUM OPENING:</b>	39' 0" wide x 27' 2" high
<b>STAGE WIDTH:</b>	48' 0" wide (32' 0" working width)
<b>STAGE DEPTH:</b>	31' 2" (from apron with pit exposed) 37' 3" (from center front of pit with pit cover installed)
<b>WING SPACE STAGE L:</b>	12' 0" (4' 0" restricted overhead)
<b>WING SPACE STAGE R:</b>	8' 0" (severely restricted height and width)
<b>TRIM HEIGHTS:</b>	16' 0" (main drape and all borders) 20' 0" (1st, 2nd, and 3rd electrics)
<b>HEIGHT TO GRID:</b>	60' 0"

<b>DISTANCE FROM BALCONY RAIL TO MOVIE SCREEN</b>	50' 0" (in the downstage position, batten #5)
<b>DISTANCE FROM PROJECTION BOOTH TO MOVIE SCREEN</b>	80' 0"
<b>DISTANCE FROM SR OR SL TO SOUND TABLE</b>	200' 0" / 250' 0" (for perimeter cable runs)
<b>DISTANCE FROM SR TO CENTER OF BALCONY</b>	150' 0" / 200' 0" (for audio and power cable runs)

### LOAD-IN:

Entrance to the stage for scenery and performers is through the 8'0" x 8'0" double stage door located on the western side of the building (up stage right). A 4'6" wide ramp leads from the door down to the stage level.

*\*We do not provide truck to stage loaders/hands for gear dump.*

### DRESSING ROOMS:

A total of 10 dressing rooms are available;

**SR Dressing Room:** located off-stage right and accommodates up to 4 people. It includes a private toilet and sink. Room size is approximately 10' x 12'.

**SL Dressing Room:** located off stage left and down a few stairs. It accommodates up to 8 people, has one private toilet, two sinks, and a small air conditioner. Room size is approximately 12'6" x 17' 0".

**Upstairs Dressing Rooms (1-8):** located on the second and third floors off stage right. Each dressing room is 5' x 8' includes a sink and accommodates 2 people.

Two toilets are located at the front of each hallway for these dressing rooms.

### TELEPHONES and WIRELESS CONNECTIONS:

The Ebell does not provide phone service. For further information regarding DSL or other high tech phone lines contact the Director of Production. Wireless connection to the internet is available. Our wireless connection is fiber with a download speed of 150 Mbs. Wi-Fi Password provided on request.

### ADA SERVICES:

Hearing assistance devices for audience members are available on request. Please see the Director of Production.

*NOTE: When Producers supply their own sound system, a line level house mix must be provided to the Ebell ADA system. No exceptions!*

## TECHNICAL EQUIPMENT INFORMATION SOUND

The Wilshire Ebell Theatre provides the bottom two boxes of our D & B Line Array style Public Address system as part of your basic venue rental package. This is suitable for the orchestra seating area. At additional cost, there are two different options for sound packages, that include either 12 or 18 PA boxes, Monitor Wedges, Sidefills, IEM's, Consoles, Microphones, Playback devices and further rider fulfillment.

*Thank you for your understanding in advance that the Ebell house PA system is a permanent install and does not come out of its house hang position. Moving the PA requires a strike and restore fee approximate to the full package rental. – Please see additional rentals pack.*

Please see the “Additional Theatre Rentals” packet for more information about the sound system and the package options available.

### **TECHNICIANS:**

There is one Ebell Theatre Technician that comes with your contractually included package. Any additional Technician or Stagehand needs can be requested and fulfilled by the Ebell Director of Production. In some cases where there is need, the Director of Production will assess the addition of technicians and or stagehands to your show.

Technicians' rate is \$450 for a 10 hour call. \$300 for a 10-hour call for Stagehands.

Technicians' roles include: LDs, Video Techs, A1, A2s and Operators.

Stagehands are physical labor and have a 4-hour minimum. They can be utilized for loading, build and strike. Stagehands do not operate equipment.

### **CLEARCOM/STAGE COMMUNICATIONS:**

The Ebell Theatre uses “ClearCom” brand headsets. A total of six (6) are available for use. The producer may supply additional headsets to add to our system only if they are ClearCom brand.

# TECHNICAL EQUIPMENT INFORMATION

## SOUND

### MICROPHONE INVENTORY:

3 – B98A W CLAWS  
1 – B98H W CLIP  
2 – SHOTGUNS – no clips  
2 – B57A  
5 – SM57  
4 – SM81  
5 – SM58  
2 – SM565 w Switch  
2 – KSM32  
1 – SENN609  
3 – SENN504 no claws  
1 – B52A  
1 – B91  
3 – SENN904 w Claw  
2 – AKG CLIP ON  
4 – AUDIX 910/60  
3 – AUDXI9  
1 – AUDXF5  
1 – AUDXF6  
3 – AUDXF2  
8 – Shure HANDHELD RF SM58 MICS  
8 – Shure RF PACKS  
10 – HEADSET Countryman Copy  
8 – LAVS Shure  
4 – BSS DI  
10 – RADIAL D1 DI  
3 – RADIAL D2 DI

## SCENERY

The Wilshire Ebell Theatre does not have an inventory of scenic materials, props, flats, or drops except as listed below. **The use of any “HOUSE” furnishings (i.e. lobby tables, chairs, or benches) is prohibited!**

### PLATFORMS:

12 – continental style parallels (risers) as follows:

4 – 4' x 8' x 1' high

4 – 4' x 8' x 2' high

4 – 4' x 8' x 3' high

### MUSIC STANDS and CHAIRS:

50 – Wenger music stands

100 – Wenger black-padded chairs

1 – Conductor's podium

10 – Music stand lights



## TECHNICAL EQUIPMENT INFORMATION

### LIGHTING

A basic lighting system is provided as part of your venue rental package. All equipment is hung, circuited, and colored according to our house plot. Any changes to the house plot, including the re-hanging, re-focusing, or changing of colors of house lighting equipment is only with the permission of the Director of Production. **All changes must be restored immediately after the final contracted performance according to the original house plot as part of your load-out. Additional charges may be applied for failure to restore the house plot.**

#### CONTROL CONSOLE:

1 – Primary control - Full Boar (Hog4) with fader wing

#### DIMMERS:

167 – Digital ETC dimmers (dimmer per circuit) at 2.4K each. Circuits are permanently located in floor pockets located around the stage and overhead on one of four electrics.

#### FOLLOW SPOTS:

2 – 1200-watt Lycian follow spots are available upon payment of a rental fee (\$300 for a 4 hour show call) which includes an Ebell operator. Color temp is 6 K.

#### LIGHTING EQUIPMENT INVENTORY:

Instrument inventory is limited to those shown on the house light plot and plugging chart. Color is as indicated. Any additional instruments or color is the responsibility of the producer. Moving light packages are available upon request. Please see the additional rental pack.



# TECHNICAL EQUIPMENT INFORMATION

## MISCELLANEOUS ITEMS

### PROJECTION EQUIPMENT:

- 1 – EIKI 8k DLP (Digital Laser Projector) - \$575
- 1 – 15' x 12' Rear projection screen (Positioned per show requirements) rental cost - \$250
- 1 – DS 15' x 12' Front projection screen (Positioned per show requirements) rental cost - \$250
- 1 – US 16' x 12' Front projection screen (Positioned per show requirements) rental cost - \$250

### ADDITIONAL POWER:

Two cam breakout panel boxes are located Stage Right.

1. 400 amp per leg single phase with cam lock (distro and tails required)
2. 100 amp per leg three phase with cam lock (distro required, short tails provided).

Generator rentals can be had upon request. Please see additional rentals pack.

### PIANO:

- 1 – 9' Steinway "D", (\$450 rental fee, includes 1 tuning)

### STAGE RIGGING:

All stage battens are 1 1/2" schedule 40 pipe and are all 50' long. Batten cabling is all 1/4" fully rated aircraft cable. Batten weight capacity is determined by arbor size (350 or 300 lbs).

There are three 40'/12" box frame motorized trusses. In the (#1) Down Stage, (#2) Mid-Stage and (#3) Upstage Positions. These trusses contain our moving light packages but are available upon request for other uses. Please see the additional rentals pack for pricing.

Rigging of all scenic materials (e.g. drops, banners, flats, etc.), lighting or audio equipment will be allowed provided all safety precautions are met. The Ebell reserves the right to require the producer to hire a certified rigger to supervise or perform all rigging purposes (e.g. chain

motors etc).

### FRONT OF HOUSE POINTS:

Points are available for front of house lighting truss. Points are 33' from the fire curtain and centered 36' apart. Height to ceiling is 50'. Audio points are 8' from the fire curtain and Centered 46' apart. All measurements are approximate and for reference only. **As noted above a certified rigger is required. If needed, we will refer you to our qualified rigger.** Referrals on request.

# EBELL PLUGGING CHART, part 1

CHANNEL	AREA	QTY & INST	TOTAL	CIRCUIT	
NO.	DESCRIPTION	DESCRIPTION	WATTS	NUMBERS	COLOR
1	1st Elect Stage Left	1 – 26° Source 4 Leko	575 W	105	n/c
2	1st Elect Left of Center	1 – 26° Source 4 Leko	575 W	101	n/c
3	1st Elect Center	1 – 26° Source 4 Leko	575 W	94	n/c
4	1st Elect Right of Center	1 - 26° Source 4 Leko	575 W	88	n/c
5	1st Elect Stage Right	1 – 26° Source 4 Leko	575 W	82	n/c
6	2nd Elect Stage Left	1 – 26° Source 4 Leko	575 W	129	n/c
7	2nd Elect Left of Center	1 - 26° Source 4 Leko	575 W	124	n/c
8	2nd Elect Center	1 - 26° Source 4 Leko	575 W	120	n/c
9	2nd Elect Right of Center	1 - 26° Source 4 Leko	575 W	117	n/c
10	2nd Elect Stage Right	1 – 26° Source 4 Leko	575W	116	n/c
11	3rd Elect Stage Left	1 – 26° Source 4 Leko	575 W	149	n/c
12	3rd Elect Left of Center	1 – 26° Source 4 Leko	575W	145	n/c
13	3rd Elect Center	1 – 26° Source 4 Leko	575 W	141	n/c
14	3rd Elect Right of Center	1 – 26° Source 4 Leko	575W	138	n/c
15	3rd Elect Stage Right	1 – 26° Source 4 Leko	575W	140	n/c
16					
17					
18					
19					
20	Curtain Warms	2 – 19° Source 4 Lekos	575 W ea	9,20	L-106
21	House Right Rail	1 – 19° Source 4 w/iris	575 W	24	n/c
22	House Right/Center Rail	1 – 19° Source 4 w/iris	575 W	23	n/c
23	House Left/Center Rail	1 – 19° Source 4 w/iris	575 W	11	n/c
24	House Left Rail	1 – 19° Source 4 w/iris	575 W	12	n/c
25	1st Elect Hi Sides – Warm	2 – 26° Source 4 Lekos	1.150 K	80, 107	L-111
26	1st Elect Hi Sides – Cool	2 – 26° Source 4 Lekos	1.150 K	81, 106	L-141
27	2nd Elect Hi Sides – Warm	2 – 26° Source 4 Lekos	1.150 K	108, 131	L-111
28	2nd Elect Hi Sides – Cool	2 – 26° Source 4 Lekos	1.150 K	109, 130	L-141
29	3rd Elect Hi Sides – Warm	2 – 26° Source 4 Lekos	1.150 K	142,151	L-111
30	3rd Elect Hi Sides – Cool	2 – 26° Source 4 Lekos	1.150 K	133, 150	L-141
31	4th Elect Hi Sides – Warm	2 – 36° Source 4 Lekos	1.150 K	152, 167	L-111
32	4th Elect Hi Sides – Cool	2- 36° Source 4 Lekos	1.150 K	153, 166	L-141
33	Rail Wash House Right	1 – 19° Source 4 Leko	1.150 K	26	n/c
34	Rail Wash House R/Center	1 – 19° Source 4 Leko	1.150 K	27	n/c
35	Rail Wash House L/Center	1 – 19° Source 4 Leko	1.150 K	28	n/c
36	Rail Wash House Left	1 – 19° Source 4 Leko	1.150 K	25	n/c
37	1st Elect SR Par Cans RED	3 - Par 64's Med	1.5 K	84	L-106
38	1st Elect SR Par Cans BLU	3 - Par 64's Med	1.5 K	85	L-120
39	1st Elect SR Par Cans GRN	3 - Par 64's Med	1.5 K	89	L-139
40	1st Elect SR Par Cans AMBR	3 - Par 64's Med	1.5 K	87	L-104
41	House Rt Box Booms - Warml	4 – 19° Source 4 Lekos	3.0 K	14, 17	R-33
42	House Rt Box Booms – Cool	4 – 19° Source 4 Lekos	3.0 K	15, 19	L-119
43	House Lft Box Booms – Warm	4 – 19° Source 4 Lekos	3.0 K	2, 4	R-33
44	House Lft Box Booms – Cool	4 – 19° Source 4 Lekos	3.0 K	3, 6	L-119
45	Cyc Lights – RED	5 - Century Far Cycs	5.0 K	154, 159, 163	L-106
46	Cyc Lights – BLUE	5 - Century Far Cycs	5.0 K	156, 158, 164	L-119
47	Cyc Lights – GREEN	5 - Century Far Cycs	5.0 K	157, 162, 165	L-139
48	Cyc Lights – AMBER	5 - Century Far Cycs	5.0 K	53,155, 160,161	L-104
49	HOUSE LITES- Under Balcony	168, 169, 170, 174, 176, 178, 182, 183			n/c
50	HOUSE LITES-CHANDALIER	171, 172, 173, 175, 177, 179			n/c



## EBELL PLUGGING CHART, part 2

CHANNEL NO.	AREA DESCRIPTION	QTY & INST DESCRIPTION	TOTAL WATTS	CIRCUIT NUMBERS	COLOR
51					
52	Work Lights, Stage Right	2 - R-22's	300	30	n/c
53	Organ Box, House Right	1-S4/2-Pars/2-Par 26	1.9 K	34, 10	L-123/G-995
54	Organ Box, House Left	2-S4/2- Pars/2-Par 26	2.5 K	21	L-123/G-995
55	Work Lights, Stage Left			58	
56					
57	2nd Elect SR Par Cans – RED	3 - Par 64's Med	1.5 K	111	L – 106
58	2nd Elect SR Par Cans - BLUE	3 - Par 64's Med	1.5 K	112	L – 119
59	2nd Elect SR Par Cans - GREEN	3 - Par 64's Med	1.5 K	113	L – 139
60	2nd Elect SR Par Cans - AMBER	3 - Par 64's Med	1.5 K	114	L – 104
61					
62					
63					
64					
65					
66					
67	3rd Elect SR Par Cans – RED	3 - Par 64's Med	1.5 K	134	L – 106
68	3rd Elect SR Par Cans - BLUE	3 - Par 64's Med	1.5 K	135	L – 119
69	3rd Elect SR Par Cans - GREEN	3 - Par 64's Med	1.5 K	136	L - 139
70	3rd Elect SR Par Cans - AMBER	3 - Par 64's Med	1.5 K	137	L – 104
71					
72					
73					
74					
75					
76					
77	1st Elect SL Par Cans – RED	3 - Par 64's Med	1.5 K	99	L – 106
78	1st Elect SL Par Cans – BLUE	3 - Par 64's Med	1.5K	95, 98	L – 119
79	1st Elect SL Par Cans - GREEN	3 - Par 64's Med	1.5 K	97	L - 139
80	1st Elect SL Par Cans - AMBER	3 - Par 64's Med	1.5 K	102	L - 104
81					
82					
83					
84					
85					
86					
87	2nd Elect SL Par Cans – RED	3 - Par 64's Med	1.5 K	128	L-106
88	2nd Elect SL Par Cans - BLUE	3 - Par 64's Med	1.5 K	127	L-119
89	2nd Elect SL Par Cans - GREEN	3 - Par 64's Med	1.5 K	123	L-139
90	2nd Elect SL Par Cans - AMBER	3 - Par 64's Med	1.5 K	125	L-104
91					
92					
93					
94					
95					
96					
97	3rd Elect SL Par Cans – RED	3 - Par 64's Med	1.5 K	144	L – 106
98	3rd Elect SL Par Cans - BLUE	3 - Par 64's Med	1.5 K	146	L – 119
99	3rd Elect SL Par Cans - GREEN	3 - Par 64's Med	1.5 K	147	L- 139
100	3rd Elect SL Par Cans - AMBER	3 - Par 64's Med	1.5 K	148	L - 104

# WILSHIRE EBELL THEATRE

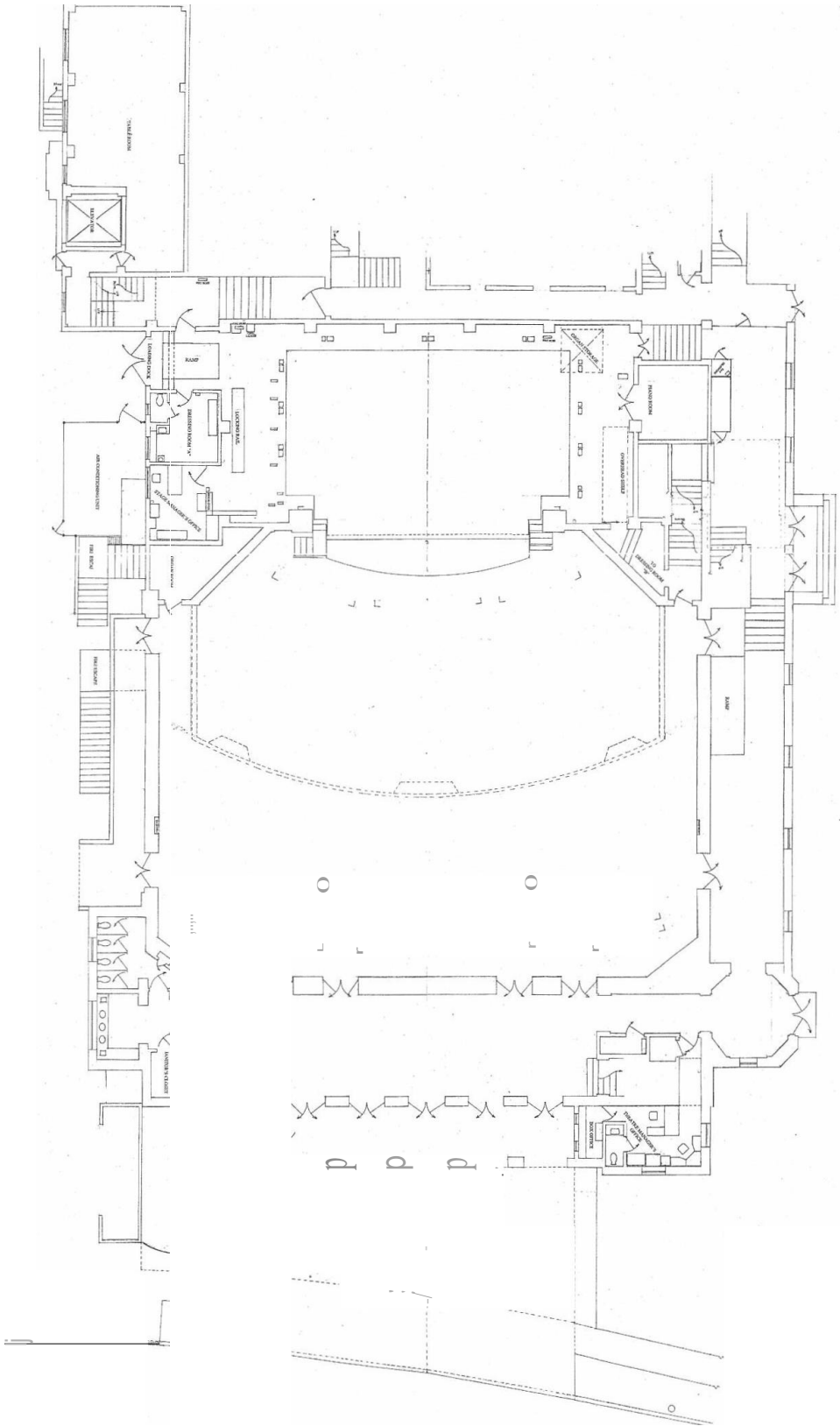
## RIGGING SCHEDULE

LINE NO.   DESCRIPTION                      MEASURE   NOTES

A	Fire Curtain/Plaster Line	0' 0"	For Reference Only
B	Grand Drape, Red	1' 6"	Guillotine style with split in center
C	1st Black Border	2' 3"	Border is 10' wide x 50' long
D	1st Black Traveler	2' 9"	Traveler is 25' 0" tall & closes completely
4***	1 <sup>st</sup> Electric	4' 2"	28 circuits (80-107)
6***	Carpenter	4' 10"	Truss #1 Location
1***	Carpenter	5' 10"	
2	2nd Black Border	6' 6"	Border is 8' wide x 50' long
E	2nd Black Traveler	6' 10"	
3	Front Projection Screen	7' 3"	Front Projection Screen
5	2nd Electric	8' 6"	24 circuits (108-131)
7	Carpenter	9' 5"	
8	Carpenter	9' 9"	
9	Carpenter	10' 2"	
10	3rd Black Border	10' 8"	Border is 8' wide x 50' long
11	Rear Projection Screen	11' 0"	Rear Projection Screen
12	Carpenter	11' 5"	
13	Carpenter	11' 10"	
14	Carpenter	12' 3"	
15	Carpenter	13' 0"	Truss #2 Location
F	3rd Black Traveler	13' 4"	Traveler is 25' 0" tall & closes completely
16	3rd Electric	15' 0"	20 circuits (132-151)
17	Carpenter	15' 6"	
18	Upstage Projection Screen	15' 11"	Upstage Projection Screen
19	Carpenter	16' 3"	
20	Carpenter	16' 6"	
21	Carpenter	16' 11"	
22	4th Black Border	17' 6"	Border is 8' wide x 50' long
G	4th Black Traveler	18' 0"	Traveler is 25' 0" tall & closes completely
H	5 <sup>th</sup> Black Traveler	21' 8"	Traveler is 25' 0" tall & closes completely
23***	Carpenter	22' 10"	Truss #3 Location
I	Carpenter	23' 10"	Located Up Stage Left
24***	Carpenter	24' 10"	
25***	4th Electric	19' 6"	16 circuits (#152-#167) Cyc Lights
26***	Carpenter	25' 10"	Cyclorama
27***	Star Curtain	26' 4"	

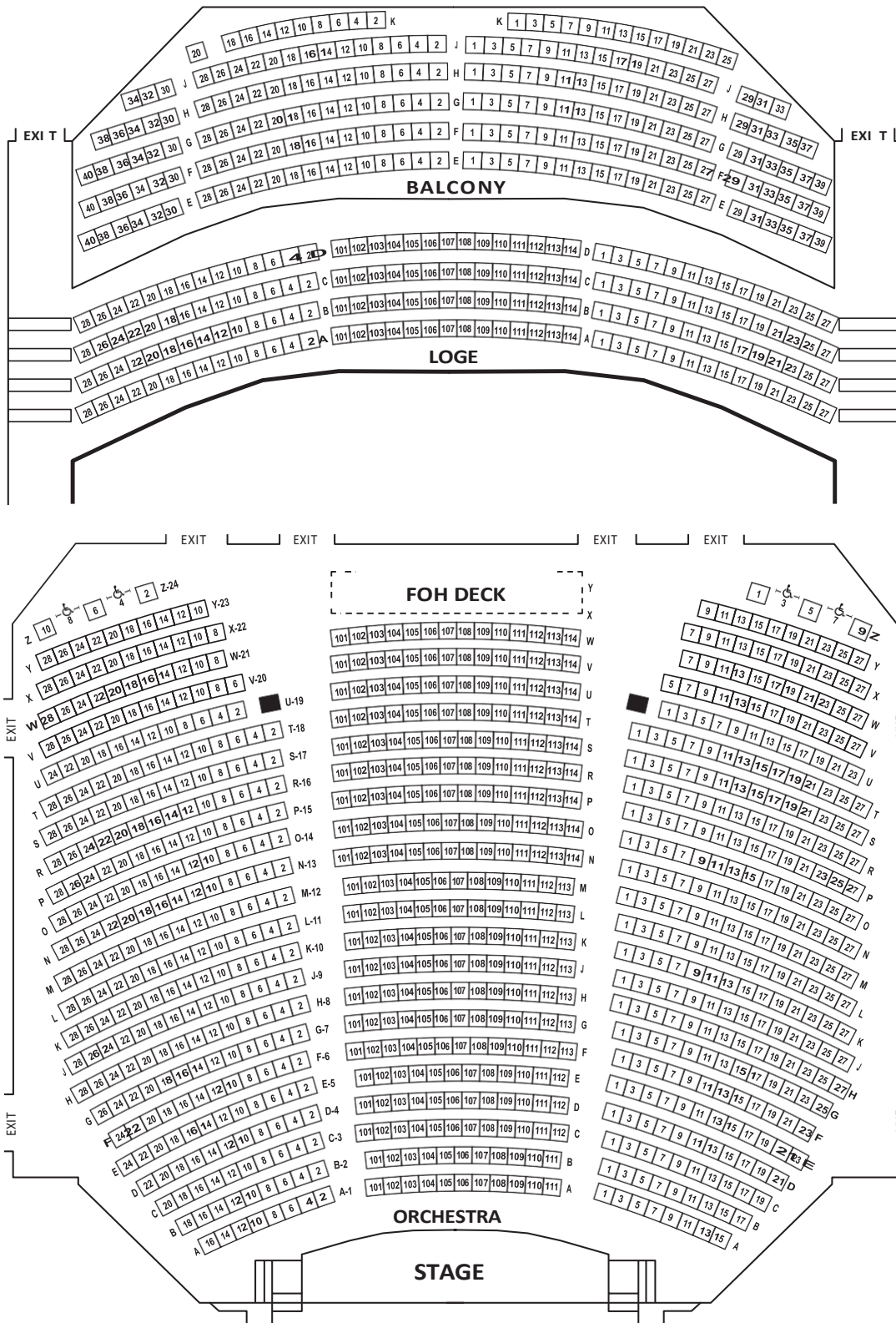
\*\*\* Indicates a batten in a muled  
position. Measurements are from the  
plaster line

## PROPORTIONAL STAGE PLOT

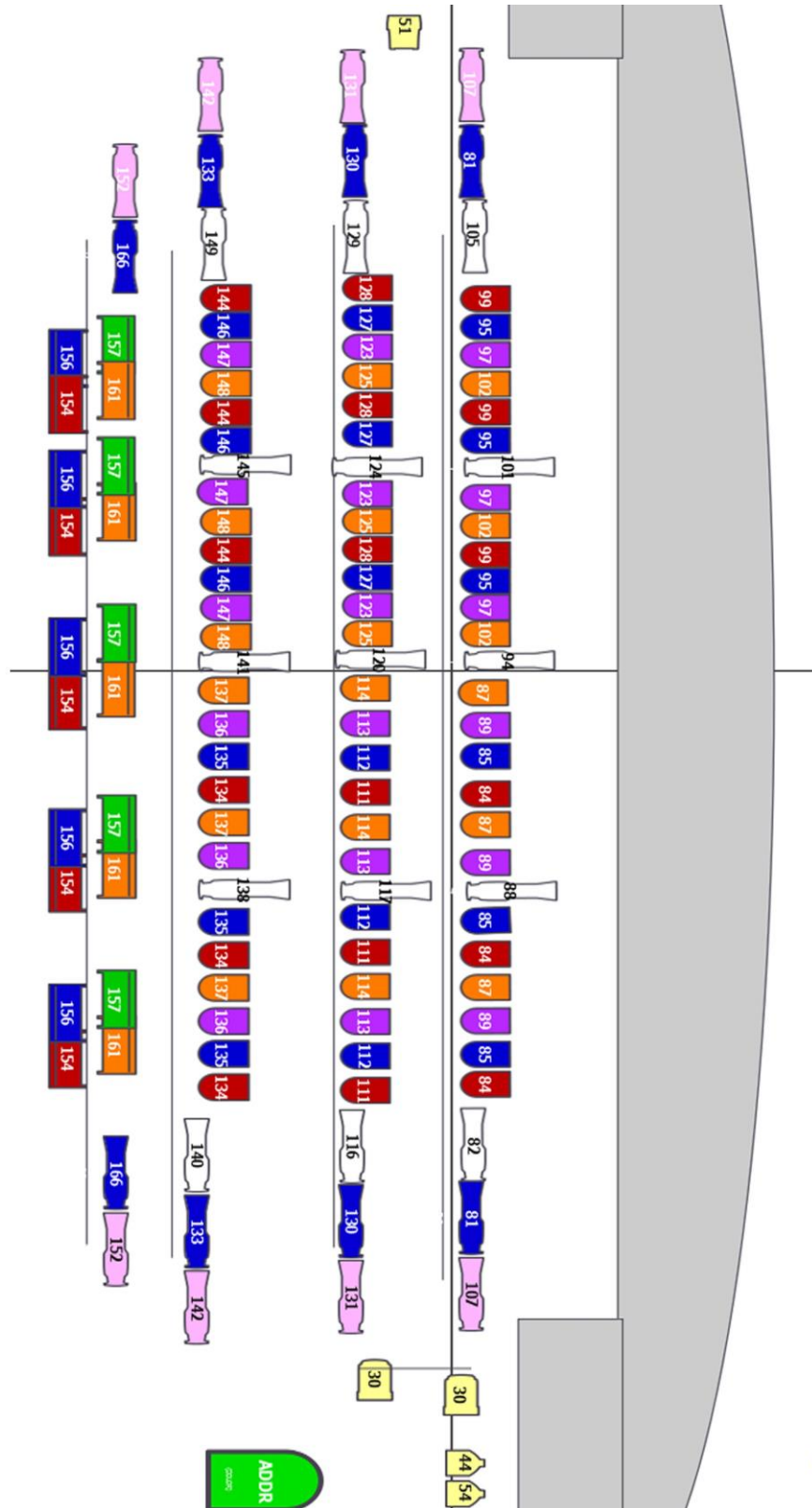


# WILSHIRE EBELL THEATRE

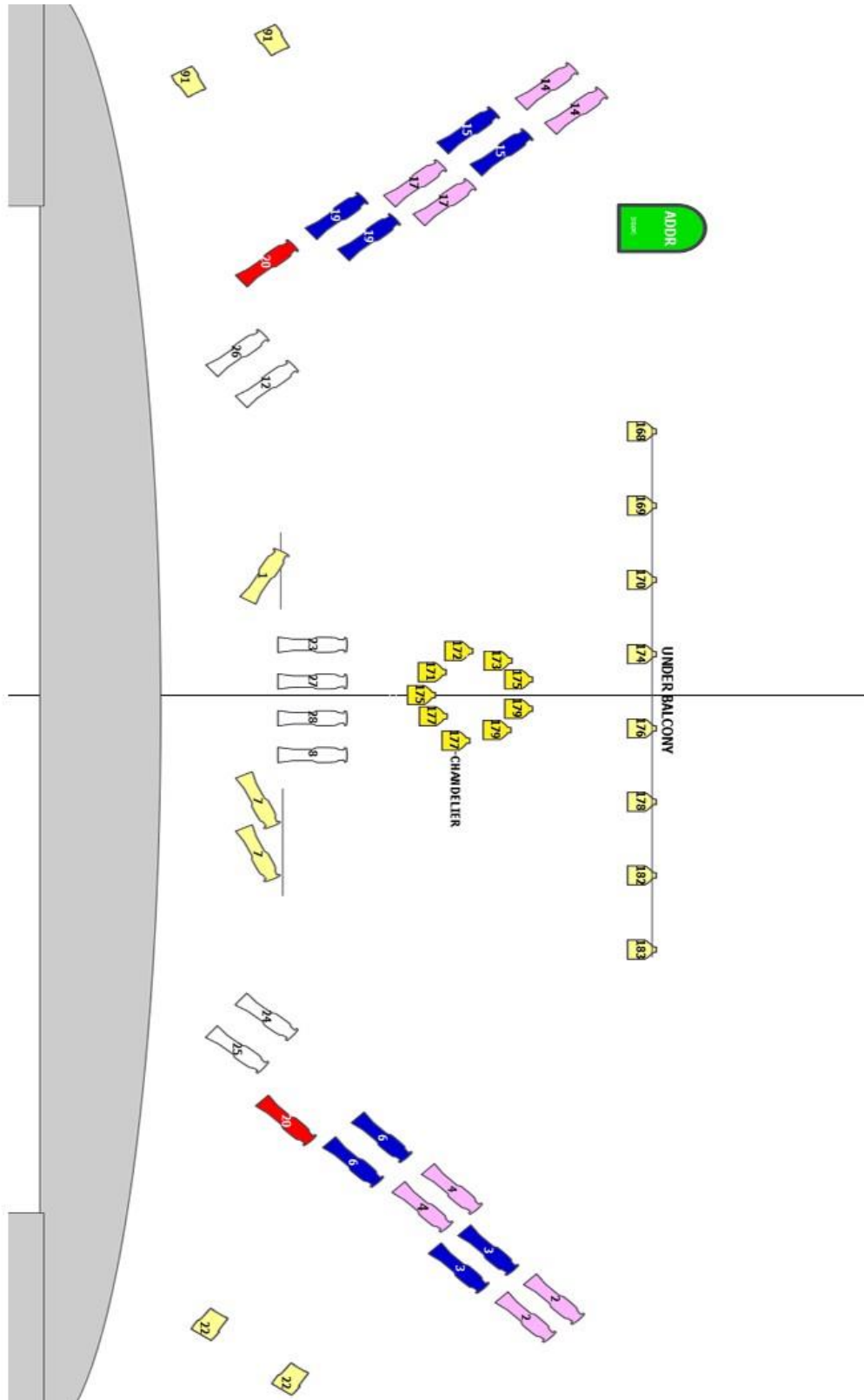
## SEATING CHART







# EBELL HOUSE COLOR/PATCH 2018



# EBELL THEATRE COLOR/PATCH 2018

